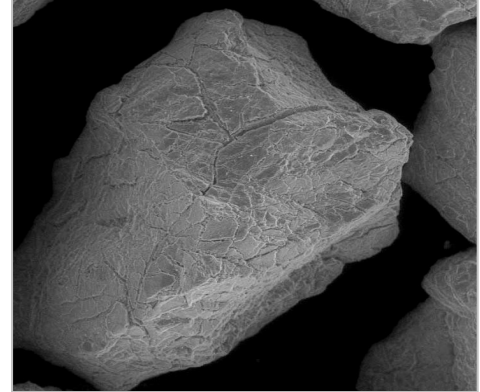




## Product Data Sheet

### C-1 Cristobalite – 200/88 M

- ⚡ Highest Conversion
- ⚡ Highest Purity
- ⚡ Consistent Sizing
- ⚡ Non-Mineralized



CED C-1 cristobalite is synthesized from high purity quartz using a solid state, high heat manufacturing process that yields a consistently high conversion and high purity cristobalite. No additives (mineralizers) are used in the manufacture of cristobalite products.

#### Physical Properties

|  |      |
|--|------|
| Specific Gravity   | 2.33 |
| Hardness (Mohs)  | 6.5  |
| Refractive Index   | 1.48 |
| pH   | 6.7  |
| BET Surface Area (m <sup>2</sup> /g)   | 2.9  |
| Coefficient of Thermal Expansion<br>(Range: 20 <sup>0</sup> C to 350 <sup>0</sup> Cx10 <sup>-6</sup> K <sup>-1</sup> ) | 54   |
| PLC @ 350 <sup>0</sup> C (%)   | 1.29 |

#### Chemical Analysis, Wt%

|                                |       |
|--------------------------------|-------|
| SiO <sub>2</sub>               | 99.7  |
| Al <sub>2</sub> O <sub>3</sub> | 0.07  |
| Fe <sub>2</sub> O <sub>3</sub> | 0.03  |
| CaO                            | 0.02  |
| MgO                            | 0.01  |
| TiO <sub>2</sub>               | <0.01 |
| Na <sub>2</sub> O              | <0.01 |
| K <sub>2</sub> O               | <0.01 |
| LOI                            | 0.15  |

#### Particle size, microns

|     |    |
|-----|----|
| D10 | 3  |
| D50 | 17 |
| D95 | 65 |

#### Other C-1 Sizes

KRS  
100M  
200M  
325M  
400M

The data shown are based on average results for production samples and are subject to normal variation on individual tests. Accordingly, test data cannot be taken as established maximum or minimum specifications. All results are subject to change.

MSDS available on request.

[www.cedprocessminerals.com](http://www.cedprocessminerals.com)